

Top Performance Software

- ▼ Linux OS
- ▼ Optional App-like software available to enhance device performances
- ▼ Camera SW can be upgraded from remote
- ▼ Our Linux platform welcomes third-party algorithms to be embedded directly on-board
- ▼ Standardized interface allows future system upgrades without significant reworks
- ▼ Plug-and-play interfaces make the new HW fully compatible with Tattile's previous ANPR cameras
- ▼ Proprietary OCR SW
- ▼ Auto iris SW to adjust camera image acquisition according to external light conditions
- ▼ SDK available for easy integration
- ▼ Proprietary App for remote configuration

	BASIC SHORT RANGE	BASIC LONG RANGE	SMART FAMILY
OCR			
			■
Included Features	Double OCR		■
	Non reflecting plate	■	■
	Speed estimation	■	■
	Colored Plate	■	■
	Easy to Install	■	■
Optional Features	Brand Recognition	■	■
	Model Recognition	■	■
	Vehicle Classification	■	■
	Vehicle Color	■	■
	Hd Video		■
	Context Camera		■
	SSD		■
	GPS / Wi-Fi / LTE Communication		■
	Autotrigger 2.0		■

SW Scalability

Additional functional (App-like) packages, enlarge the camera features

▼ **A** - Vehicle Brand, Class and Color recognition

▼ **B** - Two different OCRs on board

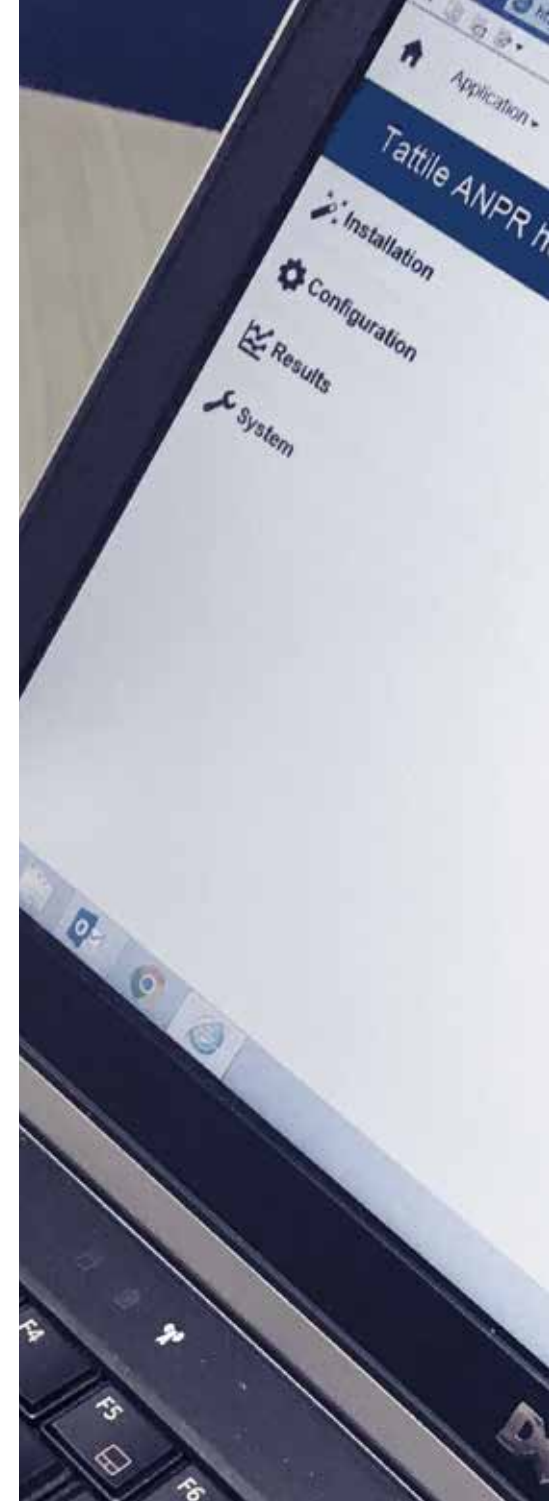
▼ **C** - Auto trigger software 2.0

▼ **D** - Speed estimation using image analysis

▼ **E** - HD Streaming for video surveillance

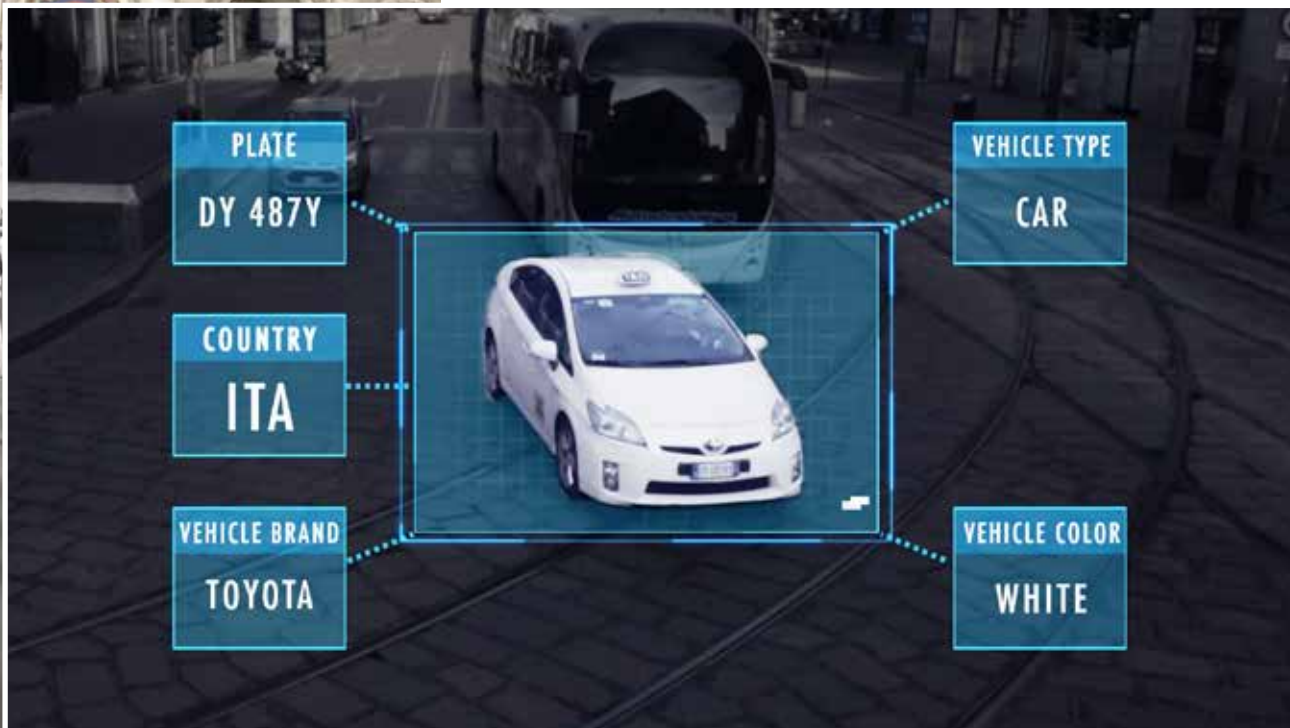
▼ **F** - Easinstall App for remote cameras configuration

- The additional Apps transform the camera from a standard plate reader to a smart vehicles analyser and a security system
- The optional Apps can be uploaded on demand, including once the camera is already in operation
- Install pack uploadable via remote connection



SW Scalability

A Brand, Class and Color recognition New frontier in vehicles identification

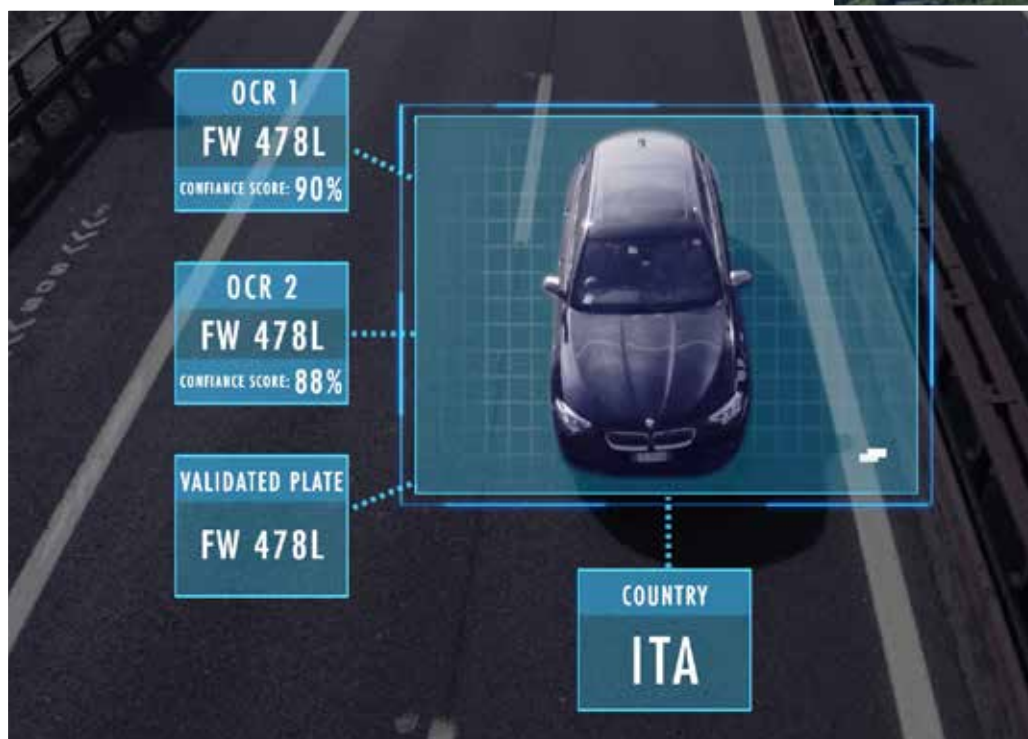


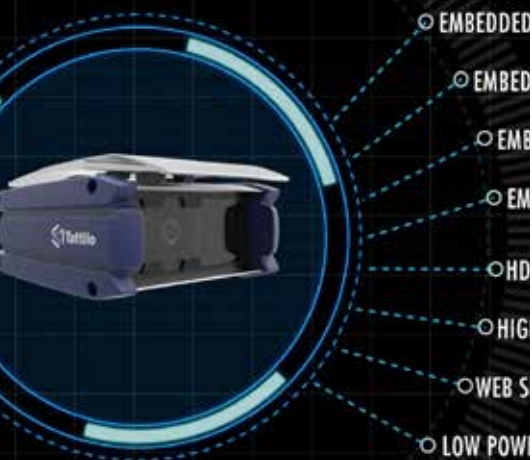
- ▶ Vehicle Brand, Class and Color recognition algorithm running inside the camera
- ▶ Licence plate, Brand & Color and class create the so-called vehicle «fingerprint» in a single report
- ▶ All the information provided by a single source
- ▶ No extra cost for external software, processing server and integration time

B Double OCR

Accuracy - Accuracy - Accuracy

- ▶ The Smart camera can simultaneously run two different OCRs on-board
- ▶ Real-time licence plate identification done by two different software
- ▶ A sophisticated algorithm matches the two results selecting the correct one
- ▶ Validated licence plate data output directly from the camera





SW Scalability

C Autotrigger 2.0 No vehicle lost

- ▶ The embedded auto trigger improves the camera detection rate
- ▶ The image analysis algorithm detects vehicles up to 250 km/h without any external trigger
- ▶ Capability to provide images of every vehicle, even without licence plate

D Speed estimation Speed by image analysis

- ▶ Embedded proprietary algorithm able to provide a vehicle's speed Estimation (error +-5%) using image analysis only
- ▶ The SW provide a reliable vehicles speed estimation without any external device

E Hd video from context camera Video Surveillance at a glance

- ▶ Vega Smart 2 HD can use its increased processor capability to provide a video streaming, directly taken from the context camera
- ▶ Video is RTSP and ONVIF compliant
- ▶ Camera can stream video 24/7 without interfering with the plate recognition process
- ▶ Advantages:
 - A single camera for two different applications (ANPR + CCTV)
 - Important savings on the installation and maintenance side
 - Reduced urban architectural impact (only one camera instead of two)

SECURITY AND TRAFFIC M

DATA

ERNMENT AGENCY

CITY COUNCI

A DESTINATION

CONSULTANT

TRAFFIC MONITORING

F Easinstall App

Quick and fast camera configuration

Tattile proprietary App for a quick and fast installation, the essential time-saving tool for any installer

Main functionalities:

- Discover available cameras via Wifi, 3G/ 4G
- Connection to a camera via SSID (Service Set Identifier) / Hidden SSID
- Take a screenshot of the ANPR camera
- Remote update / Clear of the camera's public keys
- Send email directly to technical support
- Create Hotspot connection
- Support Web view
- Scan QR Code

App is available in Android and Apple stores

