

LARA Camera

Tattile Advanced Giga Ethernet Camera

FEATURES

Resolution: up to 5 MegaPixel

PoE - Power over Ethernet

IEEE 1588 - Time Sync

Area Scan available

Progressive CCD BW and Color

Back Focal precalibrate for C mount distance

Image output in RAW or JPG format

Connection via Gigabit Ethernet

Up to 50 meters with economic CAT5e cable

Multiple cameras managed by one PC

LARA Camera
PoE - IEEE1588

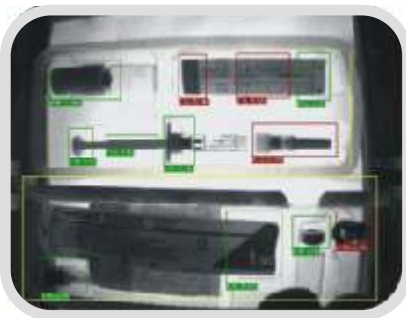


Chrono and Space Synchronizations



Typical Applications

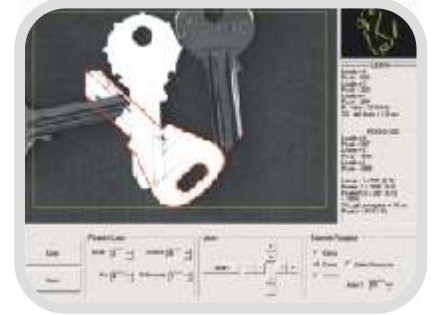
Pharma-Medical



Textile-Paper-Graphic



Digital Vision Inspection



Security



Traffic



Entertainment



Advanced in-camera Functions

ADVANCED IN -CAMERA FUNCTIONS	
IMAGE CAPTURE	
Global Shutter	Capture of all pixels at the exact same time
Asynchronous External Trigger	From 1 to 60 microseconds delay
OneShot Software Trigger	For use software triggering of single image with chrono synchronization (IEEE 1588)
Test Image Generation	To test correct set-up
Shutter Control	From about 1 microseconds to 80 milliseconds
Clamp/Offset Level	For contrast optimisation
Strobe Control	Auto-Synchronised with External Trigger
SERVICES	
Color Space Conversion	RGB 565, RGB 888, Bayer Code (raw) 10 bit, Y
User Definable Area of Interest	To manage bandwidth and CPU utilization
Programmable I/Os	1 inputs and 1 outputs
64 MB Image Memory	For image buffering and parallel image flows
Multiple Image Output	Transfer both RAW or JPG and filtered images
FILTERS	
Downloadable user-definable LUT	8 bit programmable look-up-table

Technical Features

TECHNICAL FEATURES	
Network Interface	Giga Ethernet 802.3ab
PC Requirements	Pentium IV, 256 MB RAM
PC operating systems Requirements	MS-Windows XP Professional®, XP Embedded®, Vista®, Linux Kernel version 2.4.xx = 2.4.27 and 2.6 iptables = 1.3.3
Inputs	1 optoisolated inputs 24 Vdc 20mA
Outputs	1 PNP optoisolated outputs open collector
GigE Card Compatibility	3Com® Gigabit NIC, Intel PRO/1000MT Desktop Adapter, NetGear GA311/S, Broadcom® NetXtreme™ Gigabit Ethernet Controller
Cable	CAT5e up to 50 meters
Operating Temp.	0° to 50° C
Operating Humid.	10 to 90% non cond.
Storage Temp.	-20° to 65° C
Storage Humidity	10 to 90% non cond.
Power Supply	12 Vdc to 56 Vdc @ 4,5W
Package body	Anodized aluminum
Size / Weight	66.5 × 38 × 50 mm (LxHxW) – 200 g
Lens	C mount (Area Scan)
Protection level	IP 42

LARA TAG CAMERA family			
MODEL	RESOLUTION	fps	Sensor Size
TAG MBD	640x480 BW	120	CCD 1/3"
TAG MCD	640x480 Color	120	CCD 1/3"
TAG MBD	1024x768 BW	45	CCD 1/3"
TAG MCD	1024x768 Color	45	CCD 1/3"
TAG MBD	1360x1024 BW	30	CCD 2/3"
TAG MCD	1360x1024 Color	30	CCD 2/3"
TAG MBD	2448x2050 BW	15	CCD 2/3"
TAG MCD	2448x2050 Color	15	CCD 2/3"



LARA Camera, Side View



LARA Camera, Rear View