

### FEATURES

- Antares 4.03 compatible
- Stand alone system
- Progressive scan CMOS Sensor
- Resolutions: 752x480 pixels
- Available with monochrome or colour sensor
- Frame Rate: up to 60 fps
- Interchangeable LED illuminator and optics
- Low Power Consumption: 3.8 W without illuminator

### Typical Applications

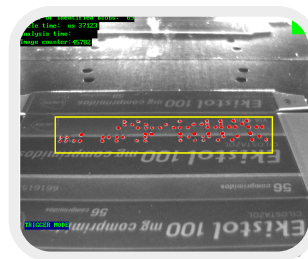
Quality Control



Barcode



Braille



Robot Guidance



 Antares 4.03

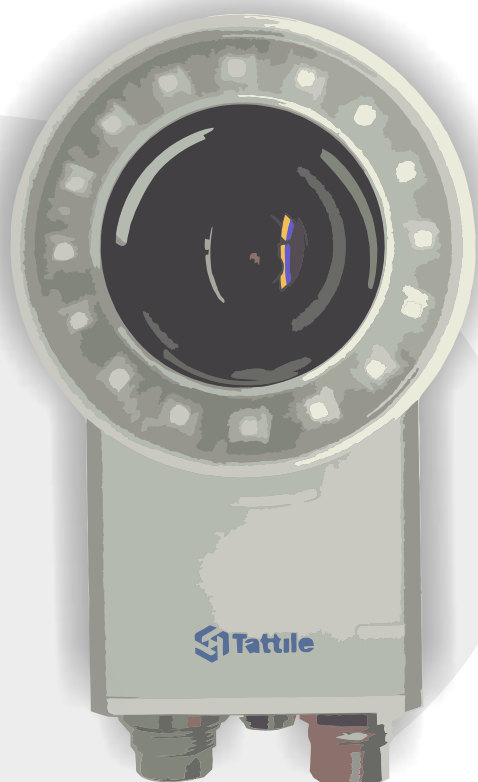


### SOFTWARE FEATURES

Operating System	T.O.S. (Tattile Operating System)
Development Environment	Tattile Antares 4.03
Communication	Fast Ethernet, RS485

### TECHNICAL FEATURES

SYSTEM	
Microprocessor	ARM Freescale i.MX51 800 MHz
Memory	256 MByte DDR2
Data Storage	4 GByte
CAMERA	
Sensor	Progressive scan CMOS
Resolution	752x480 pixels
Frame rate	Up to 60 fps
Lenses	CS-mount / C-mount (not included)
Illuminator	Optional RGB external illuminator
DIGITAL I/Os	
Input	2 optoisolated PNP 24V
Output	3 optoisolated PNP 24V
LED Driver	3-channels constant current
COMMUNICATION	
Ethernet	10base-T / 100base-TX
Serial	RS485 half duplex
ENVIRONMENTAL	
Operating Temp.	From -10°C to 50°C
Operating Humid.	From 10% to 90%
Storage Temp.	From -20°C to 65°C
Storage Humidity	From 10% to 90%
Power Supply	24 VDC 3.8 W
Body	Anodized Aluminum
Size / Weight	58 x 125.4 x 39.7 mm - 576 g
IP Protection	IP42



RGB External Illuminator



Industrial Circular Connectors

MODEL	CODE
SMART CAMERA M0 PLUS MONOCHROME 752x480 @ 60 fps	F01306
SMART CAMERA M0 PLUS COLOUR 752x480 @ 30 fps	F01307